

## Sink Base Cabinets

### Product Numbers

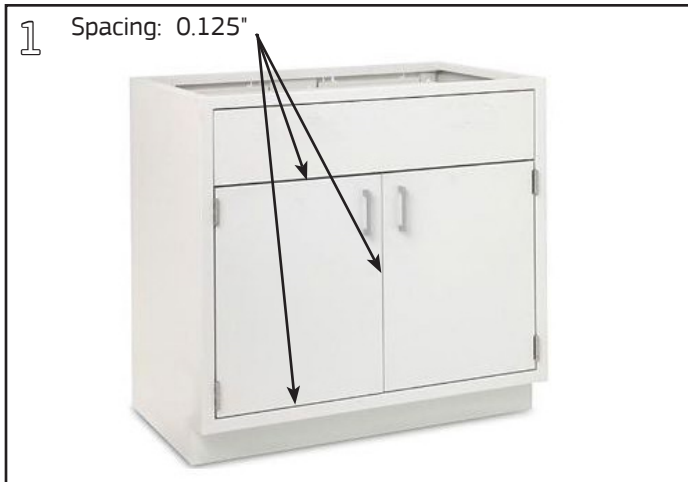
- LUCAxxyy\*
- LUCSxxyy

### Required Tools

- #2 Phillips Screwdriver
- 1/4" Wrench or Socket

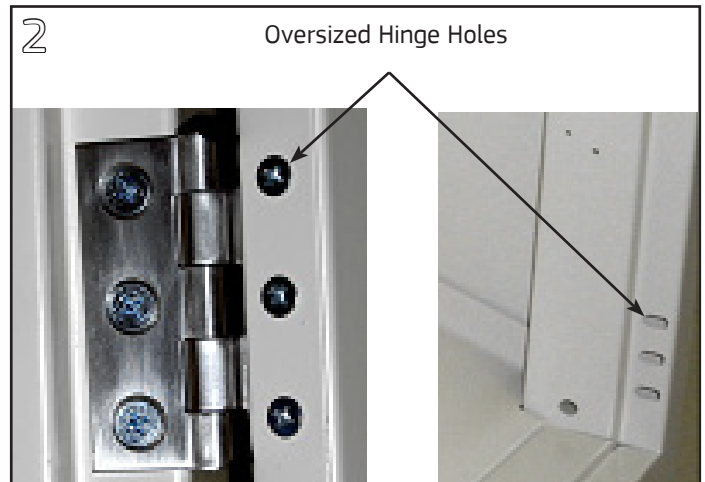
**Hardware Pack:** none

\* **LUCA CABINETS:** Remove the cross brace support after cabinet is installed and leveled (see page 2).



### Door Adjustment:

For ideal spacing of doors the spacing around the top, bottom and sides of doors should be 0.125". The space between doors also should be 0.125".

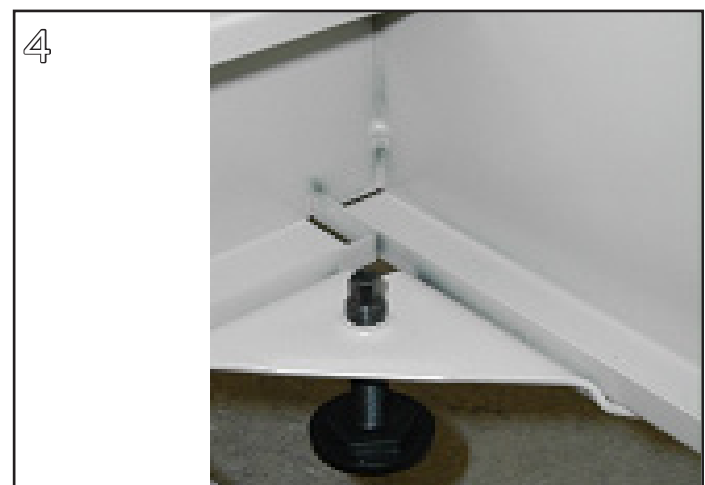


### Adjusting the door (hinge) up or down:

Oversized hinge holes in the cabinet allow for side-to-side and limited up and down adjustment. Adjust the doors slightly by loosening the screws in the hinges and moving the door up or down. Tighten the screws securely when finished.



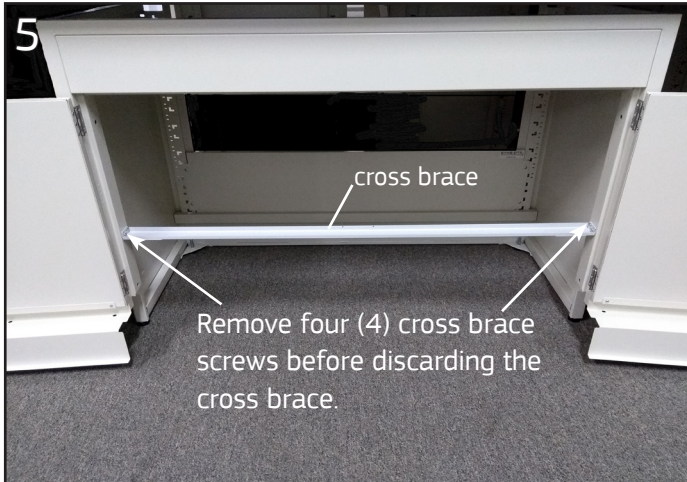
Remove the cabinet's bottom panel. Lift up at the back edge, then tilt and remove the bottom panel.



Adjust the four levelers to accommodate uneven or sloped floors with a 1/4" wrench or socket. Replace the cabinet bottom and shelves.

## Sink Base Cabinets, LUCA ONLY

\* LUCA CABINETS: Remove the cross brace support after cabinet is installed and leveled.



Each LUCA (door-to-floor) base cabinet is shipped with a cross brace support that must be removed after the cabinet is installed and leveled. Remove and discard the screws at each end of the cross brace. Then, remove and discard the cross brace.