

UTILITY DISTRIBUTOR END FILLER

Attach the End and Three-way Fillers **after** the Utility Distributor have been installed on the frames and before reattaching the front covers.

Important! The bottommost screw must be removed for installation.

1. With End Filler on it's side, place 5/16 x 3/8" phillips screw through small hole on inside of part.
2. Holding screw with screw driver, align End Filler over the Utility Distributor's end with large hole at the top. Fasten Filler to the UD with the lowermost 5/16 x 3/8" phillips screw through the UD and into the hanger clip. (Figure 1)
3. Continue installation of Utility Distributor Covers per their instructions.

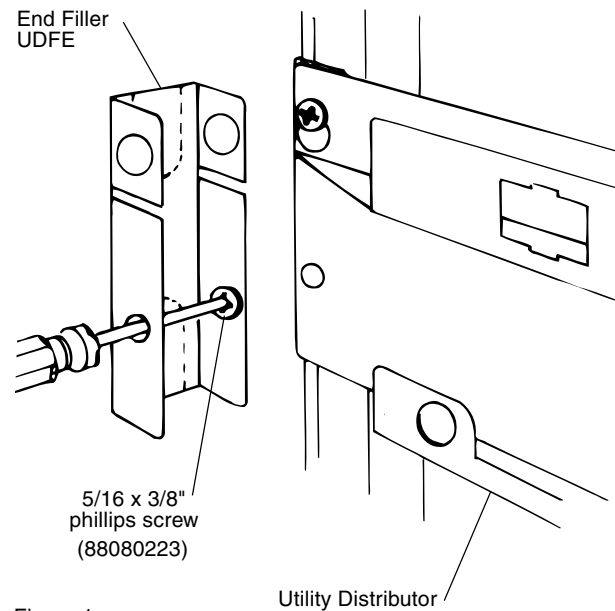


Figure 1

UTILITY DISTRIBUTOR THREE-WAY FILLER

4. Align Three-way Filler between Utility Distributors, inserting Z tabs of Filler over the top channel's bottom. Gently push in Filler till it's even with the face of the UD. (Figure 2)
5. Continue installation of Utility Distributor Covers per their instructions.

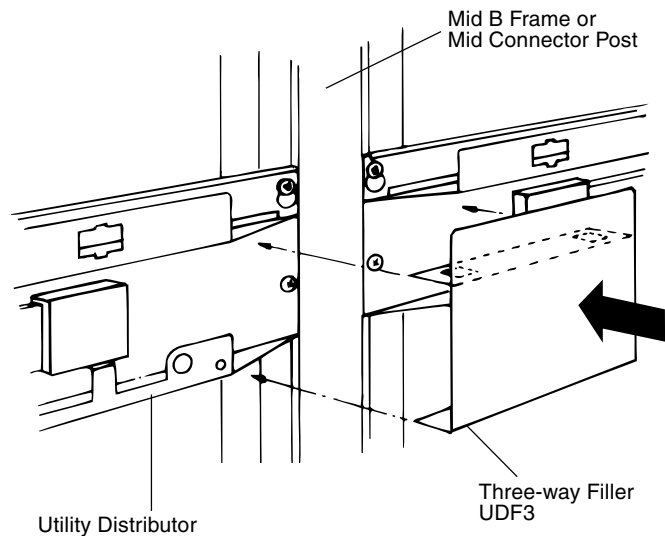


Figure 2

UTILITY DISTRIBUTOR THREE-WAY FILLER, continued

6. Reattach “bezel” by inserting flange through opening in base and push-in quick fasteners to secure.

To remove Simplex Receptacles

7. Position prongs of the Receptacle Removal Tool above and below the receptacle. Push-in until a double snap is heard. Pull receptacle out with tool. (Figure 2)

Power connection of in-line Utility Distributors

8. Select Power Jumper Cable required. (Figures 4). Turn jumper to the “up” position, marked on plastic end piece. Plug jumper into adjoining ends of the power blocks. Make sure jumper is located to the front side of the block for ease of assembly. (Figure 5)

9. To remove jumper, push in adjacent tab on power block and pull-out jumper simultaneously.

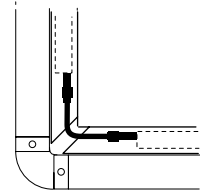
Power connection to building supply

10. After determining building power supply, plug female connector of Power Entry Cable into the power block of the distributor with the Cable in the “up” position. A licensed electrician must hardwire the Power Entry Cable to the building supply. (Figure 5)

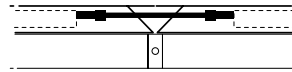
Important! At this time install the End, Three-way and Four-way Fillers if required.

Reattachment of covers

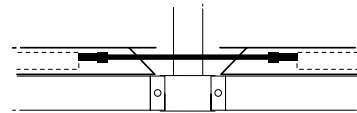
11. After all power and utility connections are made, reattach cover to the base unit by placing top flange of cover over top edge of base unit. Push-in quick fasteners to secure cover.



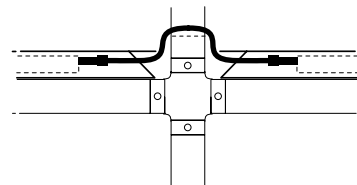
PJ812
90° Corner



PJ814
Frame to Frame



PJ818
Frame/B Frame/Frame



PJ820
4-way connection

Figures 4

4-3/4" Hanger Clip Hardware Pack - HCP4

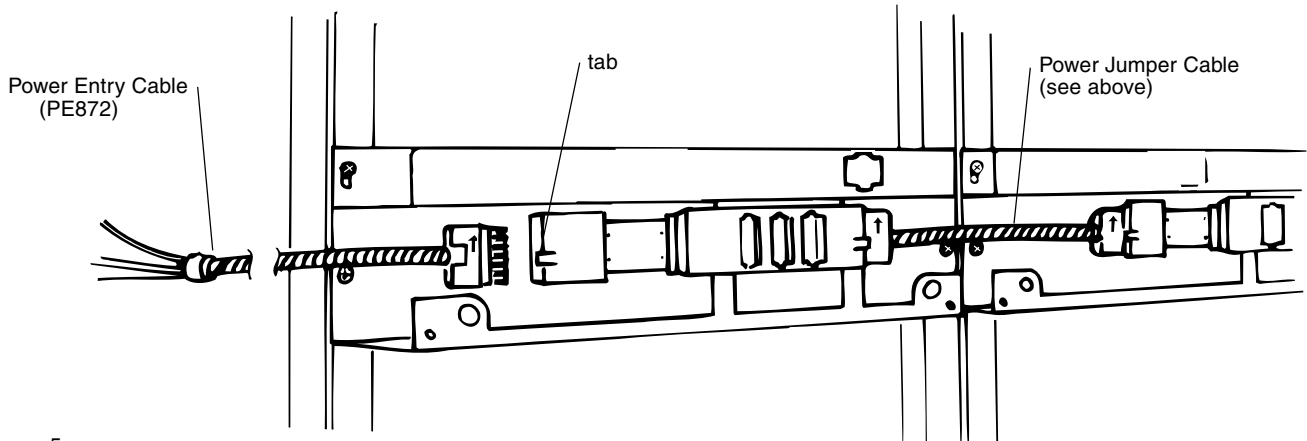


Figure 5